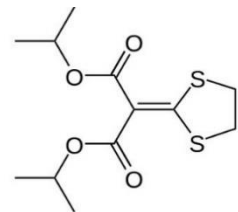


# Isoprothiolane

Active ingredient	Isoprothiolane
Formulation	40% EC (w/w)
Chemical class/FRAC	Inhibition of phospholipid biosynthesis, methyltransferase /group F2
Mode of Action	Inhibition of the growth of all stage of fungus
Target	Rice Blast ( <i>Magnaporthe grisea</i> )
Approved on	Rice
Registered in	RU, EGY, IRN
Brand names	FujiOne, Fuji-1



## Product benefits

### Basic activity

- ✓ **Excellent anti-fungal activity** to all lifecycle of *Magnaporthe grisea*
- ✓ **High PGR activity** to increase secretion of plant hormones and enzymes
- ✓ **Excellent systemic activity**, both from leaf to root and from root to upper leaves

### Excellent biological performance in the field

- ✓ High efficacy on rice blast, both preventively and curatively
- ✓ **No sensitivity shift** observed since Isoprothiolane was launched > 40 years ago
- ✓ **Low resistance risk** of rice blast against Isoprothiolane in the field
- ✓ Registration in Japan of PGR as “Improve percentage of ripened grains”
- ✓ **High PGR efficacy** to yield quantity and quality of grains by activating root activity and promoting assimilates translocation
- ✓ Highly efficient to control “False smut” at the same time
- ✓ **Low toxicity** to mammals, aquatic organisms and wildlife